

THE HOLLY

Starting at 2,334 sq.ft.



Open and airy best describes this spectacular single-level home. As you enter the foyer, you'll be greeted by an open-flow dining room bordered with four columns. Take a few steps more and you are in the kitchen complete with breakfast bar, hardwood cabinets, ceramic floors and separate breakfast room. Adjacent to the kitchen is the great room.

Just down the hall from the foyer is the grand owner's suite with tray ceiling, owner's spa and large walk-in closet. There are also two, secondary bedrooms with shared bath. The design layout of The Holly makes this the perfect home for entertaining!



www.BayfrontAtRehoboth.com

Renderings and floor plans are the designer's concepts and may vary in detail from plans and specifications. All room dimensions are approximate and may change without notice. Plan dimensions, architectural features and materials are subject to change without notice or obligation.



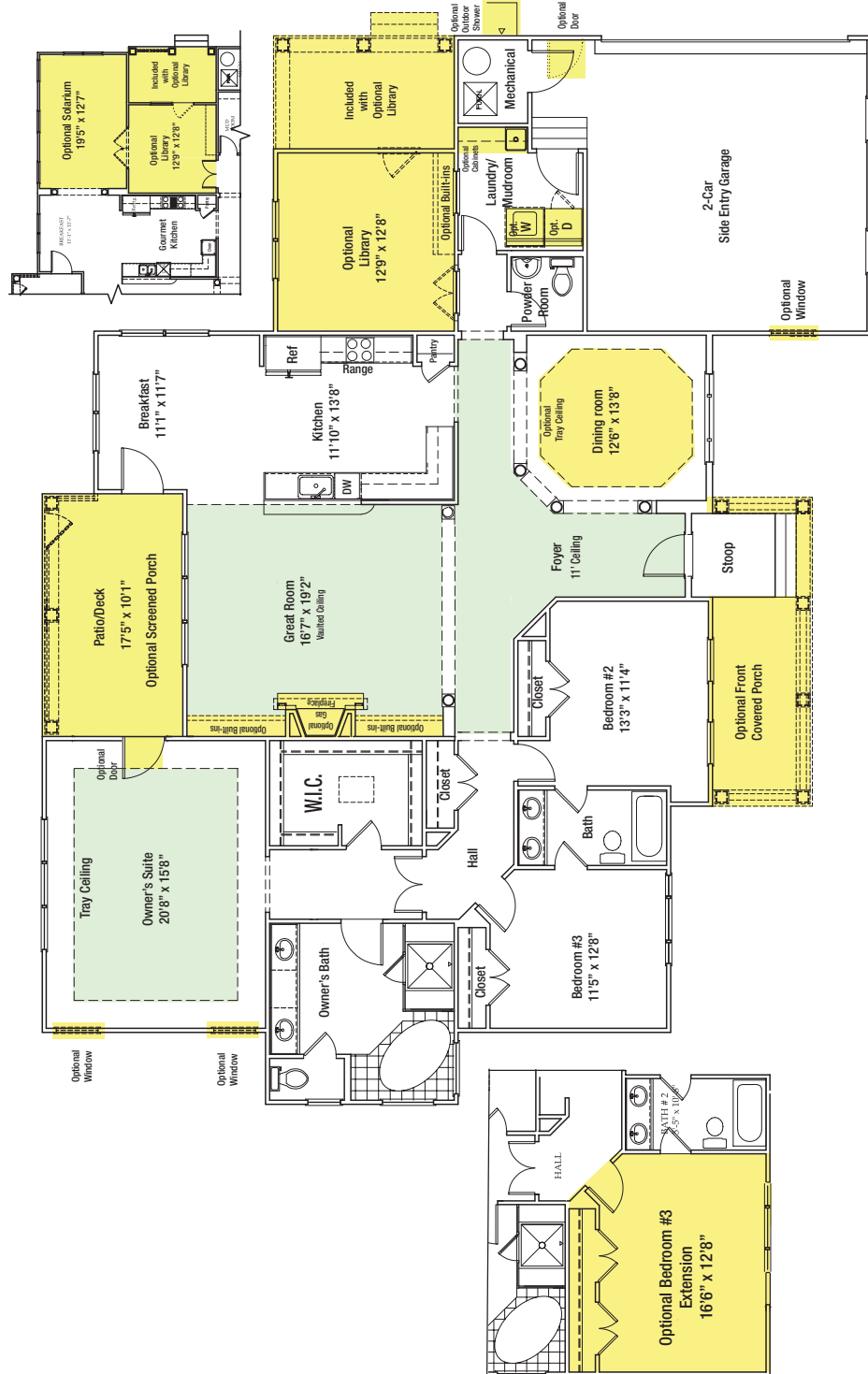
THE HOLLY

Starting at 2,334 sq.ft.



3 BEDROOMS
2 1/2 BATHS

Rambler 9' Ceilings



Optional Volume Ceiling

www.BayfrontAtRehoboth.com

Renderings and floor plans are the designer's concepts and may vary in detail from plans and specifications. All room dimensions are approximate and may change without notice. Plan dimensions, architectural features and materials are subject to change without notice or obligation.

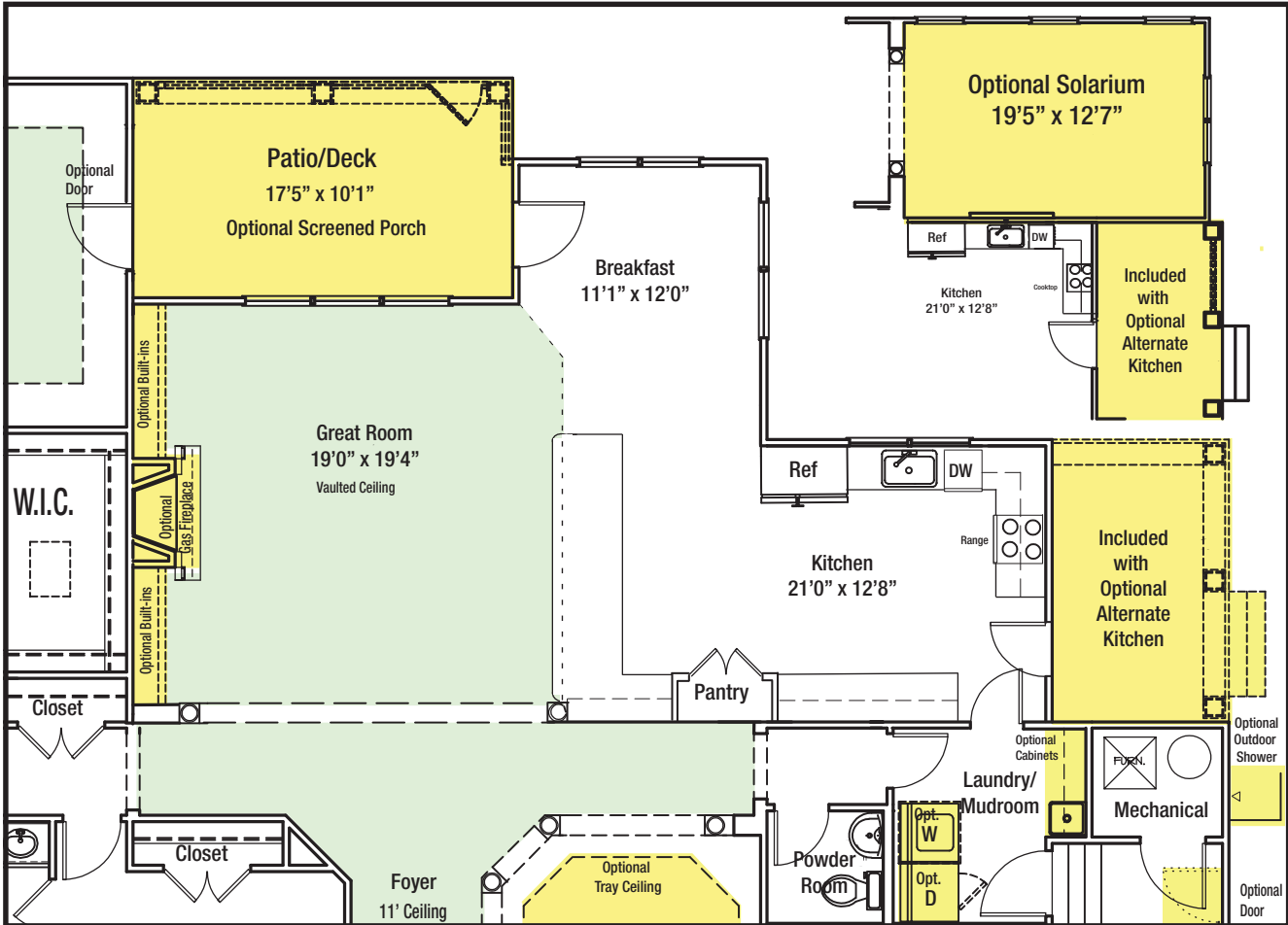


THE HOLLY

Starting at 2,334 sq.ft.



ALTERNATE KITCHEN AND GREAT ROOM OPTIONS



Optional Volume Ceiling

www.BayfrontAtRehoboth.com

Renderings and floor plans are the designer's concepts and may vary in detail from plans and specifications. All room dimensions are approximate and may change without notice. Plan dimensions, architectural features and materials are subject to change without notice or obligation.



THE HOLLY

Starting at 2,334 sq.ft.



STANDARD FEATURES

Exterior

- 1/2 Acre Wooded Homesites
- Bay views (see site plan for specific homesites)
- Lawn irrigation system (front and sides)
- Sod - front and 10' back on side
- Lawn maintenance program
- Two-car garage
- Frost free hose bibs (front & rear)
- GFI outlets (front, rear and garage)
- "Hardi-Plank" style fiber cement siding
- Concrete driveway and walkway
- Landscaping package
- Carriage style garage doors with openers

Kitchen

- Granite Countertop
- WHIRPOOL - ENERGY STAR APPLIANCES
- Single or double bowl stainless steel sink
- KOHLER Faucet with pull-out sprayer
- 42" Hardwood cabinets

Baths

- Ceramic tile Owner's bath - 12 x 12 floor
- Secondary Baths -12 x 12 floors
- Elongated toilets
- Hardwood cabinets with recessed panel doors
- KOHLER plumbing fixtures

Interior

- 1st floor owner's suite
- 2-tone paint
- CAT 5 cable outlets
- Ceramic foyer, kitchen/breakfast & powder room
- Decorative columns (as designated per plan)
- Schlage levered interior door handles
- Laundry tub in laundry room (per plan)
- 9' ceilings (per plan)
- Carpeted staircase with stained rails and painted balusters
- Recessed lighting throughout
- 2 panel 6' 8" interior doors

Energy Efficiency (Energy Star)

- Draft reducing house wrap
- Low-E argon filled thermal pane insulated single hung tilt-out windows
- R-19 fiberglass insulation in exterior walls
- R-38 fiberglass insulation in ceilings
- 30 year Certainteed (Algae Resistant) fiberglass shingles
- High efficiency A/C & heating systems
- High efficiency water heater

Amenities

- Community pool and poolhouse
- Community center with exercise room, game room, entertainment room, kitchen
- Private beach on Rehoboth Bay with gazebo, kayak storage and kayak launch
- Boardwalk to private beach
- Walking trails throughout

www.BayfrontAtRehoboth.com

Renderings and floor plans are the designer's concepts and may vary in detail from plans and specifications. All room dimensions are approximate and may change without notice. Plan dimensions, architectural features and materials are subject to change without notice or obligation.

